



Net Tangible Assets (NTA) Update

	October	September	August
NTA before tax	\$1.12^{1,2}	\$1.16 ¹	\$1.14 ¹
NTA after tax	\$1.10	\$1.13	\$1.11

¹ Fully Diluted NTA per share incorporates both the fully paid ordinary shares and converting preference shares on issue and bonus entitlements due to be paid on conversion of the preference shares.

² On 2 October 2012, the Board declared a fully franked dividend of 4.75 cents per share in respect of the Company's converting preference shares and a fully franked ordinary dividend of 1 cent per share for ordinary shareholders for the quarter ending 30 September 2012. The record date for the dividend payment was 12 October 2012. On the same day, the Board declared a bonus issue for ordinary shareholders on a 1 for 20 basis. The record date for the bonus issue was 24 October 2012. The NTA disclosed above is after the dividend payment and bonus issue.

Clime Capital Limited offers investors the opportunity to invest in a value focused LIC managed by a recognised top performing Australian Value Equity Manager - Clime Asset Management.

Clime has a disciplined investment approach focused on the distinction between price and value. The allocation of capital is tempered by the Clime's continual macro-economic overlay.

The company has the ability to hold elevated cash levels when market risks are considered to be elevated or value is not apparent. Clime also has the ability to look across listed asset classes to seek returns.

Returns to shareholders are produced by purchasing securities that are understandable, that have honest and capable managers and are highly likely to generate superior returns over time. Securities will only be purchased when the price on offer is below the appraised value.

Top 15 Holdings

BHP Billiton Limited	7.04%
Telstra Corporation Limited	6.13%
McMillan Shakespeare Limited	5.93%
ANZ Banking Group Limited	5.55%
Multiplex Convertible Note	5.34%
Woolworths Limited	5.02%
Westpac Banking Corporation Limited	4.94%
Brickworks Limited	4.55%
Commonwealth Bank of Australia	4.13%
The Reject Shop Limited	4.13%
Australand Convertible Notes	2.91%
Seven Group Holdings Convertible Note	2.88%
Ethane Pipeline Income Fund	2.82%
Mineral Resources Limited	2.77%
Thorn Group Limited	2.42%
Cash & Cash Equivalents	16.02%
TOTAL	82.58%

Portfolio Performance

Period	Clime Capital Limited	All Ordinaries Accumulation Index	Outperformance
3 month	4.31%	7.39%	-3.08%
1 year	10.46%	8.91%	1.55%
2 years*	4.95%	2.28%	2.67%
3 years*	6.07%	3.49%	2.58%
4 years*	13.27%	7.93%	5.34%

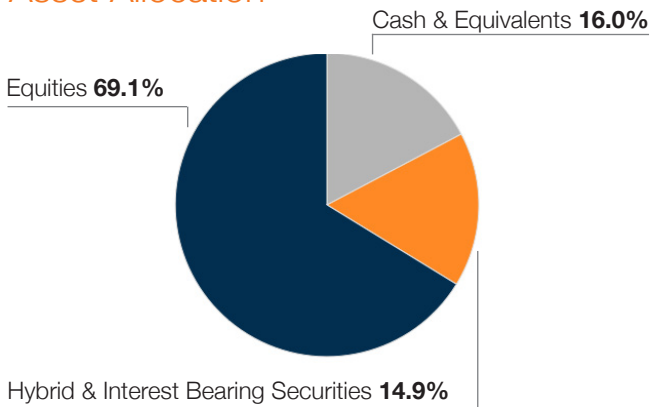
*Performance figures for more than 1 year are annualised, calculated after all operating expenses.

Clime Capital Limited's returns are measured **after all** operating expenses.

Company Overview

Mandate	Australian Listed Securities
Benchmark	All Ordinaries Accumulation
Equity and Income Securities	\$56.6 million
Cash	\$10.7 million
Total Portfolio including cash	\$67.3 million

Asset Allocation



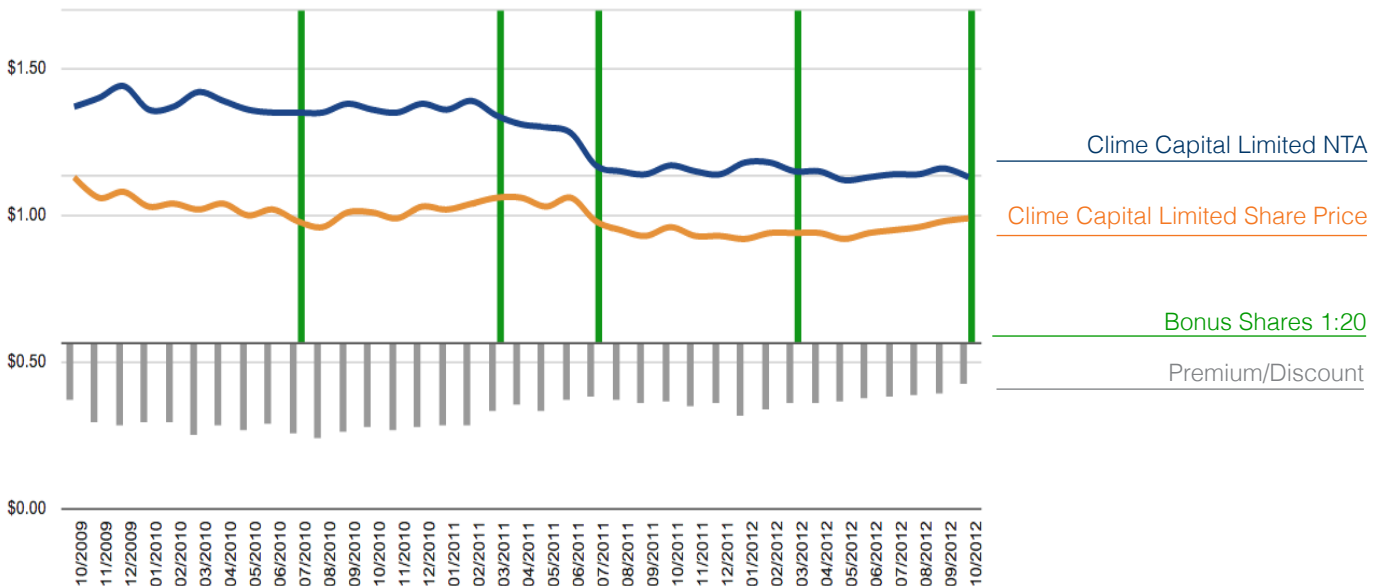
Ordinary Shares Overview (ASX:CAM)

Share Price (as at 31 October 2012)	\$0.99
Rolling 12 Month Dividend	\$0.04
Historical Dividend Yield	4.0%
Percentage Franked	100%
Grossed Up Yield	5.8%
Dividend Reinvestment Plan	Yes

Preference Shares Overview (ASX:CAMPA)

Share Price (as at 31 October 2012)	\$1.93
Rolling 12 Month Dividend	\$0.19
Historical Dividend Yield	9.8%
Percentage Franked	100%
Grossed Up Yield	14.1%
Dividend Reinvestment Plan	No

Discount to Net Tangible Assets



Data Sources: IRESS, Company Data

Copyright © 2012 Clime Capital Limited (ASX:CAM). All rights reserved. The information provided in this email and climecapital.com.au is intended for general use only. The information presented does not take into account the investment objectives, financial situation and advisory needs of any particular person nor does the information provided constitute investment advice. Under no circumstances should investments be based solely on the information herein. [Climecapital.com.au](http://climecapital.com.au) is intended to provide educational information only. Please be aware that investing involves the risk of capital loss. Data for graphs, chart and quoted indices contained in this report has been sourced by IRESS Market Technology, Thomson Reuters, Clime Investment Management and MyClime unless otherwise stated. *Past performance is no guarantee of future returns.*